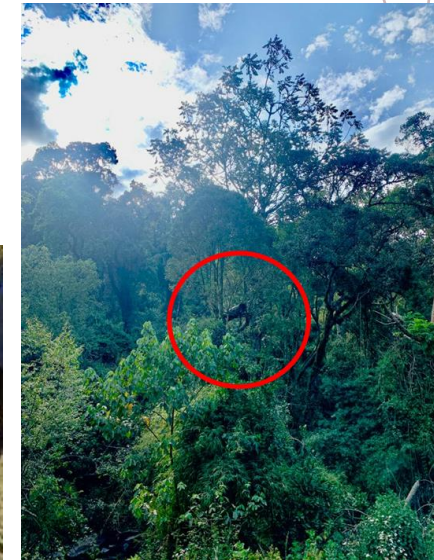
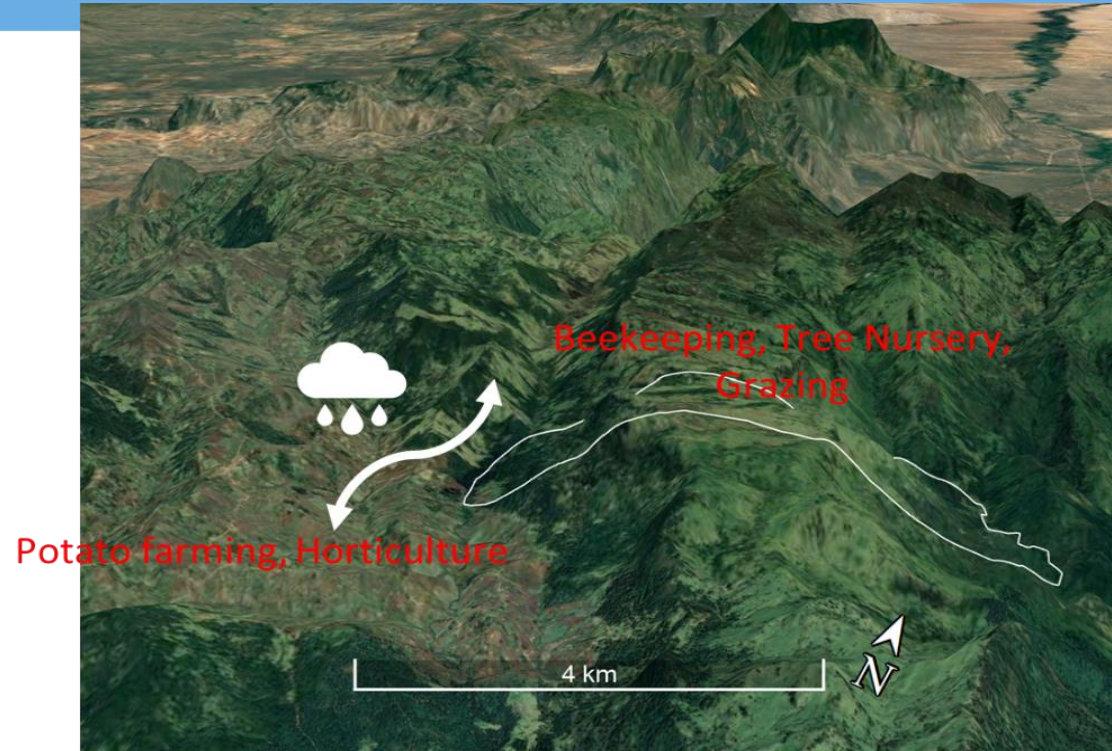


Apiculture versus Agriculture? A Case of ‘Patchy Anthropocene’ on the Cherangani Hills, Kenya

Benny Q. Shen ✉ qs228@cam.ac.uk

Dr Matthew Davies (Supervisor); Dr Samuel Lunn-Rockliffe (Advisor)
Department of Archaeology, University of Cambridge



“Two kinds of landscape structures are key to the anthropogenic disturbances we call Anthropocene: “**modular simplifications**” and “**feral proliferations.**” Plantations are an example of modular simplifications; plantation-encouraged diseases are an example of feral proliferations. Anthropocene patches emerge in the relationship between simplifications and proliferations. Tracing these relations can show us just how and why Anthropocene landscapes are so proliferous and so treacherous.”

Tsing, Mathews & Bubandt, 2019:S187